

A84 gPV 1500 VDC Fuse 14x51 mm



FEATURES:

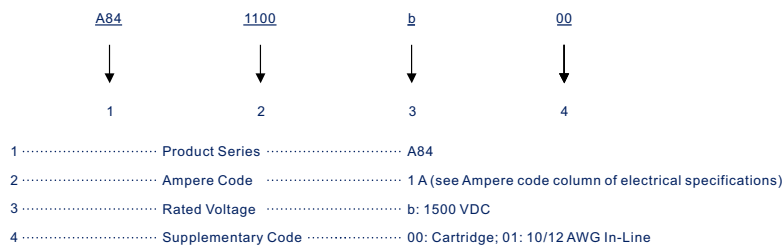
- 1500 VDC, 14x51 mm PV fuse link with glass-fiber body
- Rated Current: 1-32 A (regular use)
1-50 A (single mount inline fuse)
- Breaking Capacity: 10 kA at 1500 VDC
- Time Constant: 1-3 ms
- Special design with silver plated caps for high-power PV applications
- Standards: UL 248-19
- Approvals: UL (File: E490190)

ELECTRICAL SPECIFICATIONS

Part Number		Rated Current	Ampere Code	Breaking Capacity	I ² t (A ² s)		Dissipation (W)		Certifications
Cartridge	10/12 AWG In-Line				Pre-Arcing	Total	0.8 In	1.0 In	UL
A841100b00	A841100b01	1 A	1100	10 kA@1500 VDC	20	110	0.1	0.1	•
A841200b00	A841200b01	2 A	1200		40	220	0.2	0.3	•
A841300b00	A841300b01	3 A	1300		60	330	0.3	0.4	•
A841400b00	A841400b01	4 A	1400		80	440	0.4	0.6	•
A841500b00	A841500b01	5 A	1500		100	550	0.5	0.7	•
A841600b00	A841600b01	6 A	1600		120	660	0.6	0.9	•
A841800b00	A841800b01	8 A	1800		160	880	0.9	1.1	•
A842100b00	A842100b01	10 A	2100		200	1100	1.1	1.4	•
A842120b00	A842120b01	12 A	2120		240	1320	1.3	1.7	•
A842150b00	A842150b01	15 A	2150		300	1650	1.6	2.2	•
A842160b00	A842160b01	16 A	2160		320	1760	1.7	2.4	•
A842200b00	A842200b01	20 A	2200		400	2200	2.1	2.9	•
A842250b00	A842250b01	25 A	2250		500	2750	2.7	3.6	•
A842300b00	A842300b01	30 A	2300		600	3300	3.2	4.3	•
A842320b00	A842320b01	32 A	2320		640	3520	3.4	4.6	•
-	A842350b01	35 A	2350		700	3850	3.7	5	•
-	A842400b01	40 A	2400		800	4400	4.3	5.7	•
-	A842450b01	45 A	2450		900	4950	4.8	6.5	•
-	A842500b01	50 A	2500		1000	5500	5.3	7.2	•

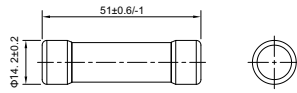
Note: (1) Typical pre-arcing I²t measured at 10*I_n current

PART NUMBER SYSTEM

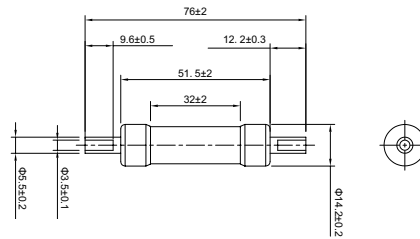


DIMENSIONS (mm)

A84xxxxb00



A84xxxxb01



TIME VS CURRENT CHARACTERISTIC

Rated Current	135 %	200 %
1-50 A	<1 h	<4 min

TIME CURRENT CURVE

